

C Conference and 28th AIVC Conference

Building Low Energy and Advanced Ventilation logies in the 21st Century

27-29 September 2007, Crete island, Greece

BOOK OF PROCEEDINGS
Volume II

Table of Contents

Foreword	xv
Organization	xvi
Technical Papers	
1. Low energy cooling for buildings in the middle Europe -case studies <i>M. Lain, V. Zmrhal, J. Hensen</i>	597
2. Regulation for energy efficiency labelling of commercial buildings in Brazil <i>R. Lamberts, S. Goulart, J. Carlo, F. Westphal</i>	602
3. Solar chimney: modelling and verification <i>D. Lanceta, J. Llorente</i>	610
4. Cooling of outdoor spaces by means of evaporative-cooling ceramic-pillars <i>D. Lanceta, F. Manteca, C. Martín, D. Martínez, F. Serna, J. Llorente</i>	615
5. The effects of roof angle and width of adjacent buildings on wind-induced cooling ventilation of atrium spaces <i>R. Li, A. Pitts, M. Niu</i>	621
6. A study on the indoor air quality management effect of intelligent building certification program <i>S. Lim, H. Lee, W. Choi, I. Song, J. Yu</i>	626
7. Research and practice co operation in Dubai <i>G. Loehlein</i>	633
8. Sustainability assessment of an energy efficient optimized solution <i>R. Mateus, S. Silva, L. Bragança, M. Almeida, P. Mendonça, P. Silva</i>	636
9. The stack effect using materials with high thermal inertia <i>E. Matsumoto, R. M. Caram</i>	641
10. Towards a comprehensive methodology for Post Occupancy Evaluation (POE): A hot dry climate case study <i>I.A. Meir, W. Motzafi-Haller, E.L. Krüger, L. Morhayim, S. Fundaminsky, L. Oshry-Frenkel</i>	644
11. Modular passively-cooled social housing using recycled ISO shipping containers; a proposal for Limassol, Cyprus <i>M. Menikou, G.P. Keeffe</i>	654
12. The social housing and sustainable design: a teaching experience <i>S. Mikami G. Pina, D.C.C.K. Kowaltowski, V.T. de Paiva, A.M.G. de Monteiro, C.R. Arias, E.T. Donadon</i>	659
13. A comprehensive approach to comfort and energy efficiency for cooling and heating: results of thermal dynamic simulation of a bioclimatic massive building in Mediterranean climate <i>A. Mingozzi, S. Bottiglioni, M. Medola</i>	664
14. Bioclimatic architecture: the case study of the sustainable residential settlement in Pieve di Cento <i>A. Mingozzi, S. Bottiglioni</i>	669
15. Passive architectural cooling principles for arid climates <i>S.M. Mofidi</i>	674
16. PREA Promoting Renewable Energies in Africa <i>H. F.O. Müller, K. Byabato</i>	678
17. A study of the application of the BRE Average Daylight Factor formula to rooms with window areas below the working plane <i>M. Naeem, M. Wilson</i>	682
18. Occupant Indoor Environmental Quality (IEQ): Results of a survey in office buildings in Iran <i>N. Nasrollahi, I. Knight, P. Jones</i>	687
19. Solar air conditioning and its role in alleviating the energy crisis of the Mediterranean hotels <i>P. Naukkarinen</i>	692
20. An investigation into parameters affecting an optimum ventilation design of high density cities <i>E. Ng</i>	697

21. Performance of natural, hybrid and mechanical ventilation systems in urban canyons	702
<i>K. Niachou, M. Santamouris, S. Hassid</i>	
22. Allowing for thermal comfort in free-running buildings in the new European Standard EN15251	708
<i>F. Nicol, L. Pagliano</i>	
23. Characterising the use of windows in thermal simulation	712
<i>F. Nicol, H. Rijal, M. Humphreys, P. Tuohy</i>	
24. Contribution of shading in improving the energy performance of buildings	718
<i>T. Nikolaou, G. Stavrakakis, I. Skias, D. Kolokotsa</i>	
25. Measurement of natural ventilation rate in Japanese residential building	723
<i>S. Nishizawa, T. Sawachi, H. Habara, H. Seto</i>	
26. Solar gains in the glazing systems with sun-shading	729
<i>G. Oliveti, N. Arcuri, R. Bruno, M. De Simone</i>	
27. Variable flow rate summer air-conditioning systems with low energy consumption for small buildings	734
<i>G. Oliveti, N. Arcuri, R. Bruno</i>	
28. An analysis of the (BRE) average daylight factor and limiting depth guidelines as design criteria	739
<i>S. Pagani Guazzugli Bonaiuti, M. Wilson</i>	
29. Dynamic sensation of comfort in buildings: the temperature changes effects	746
<i>M. Palme, A. Isalgué, H. Coch, R. Serra, I. Marincic, A. Fanchiotti</i>	
30. Combining cooled soil and natural night ventilation to achieve moderate tempered houses in Andalusia, Spain	751
<i>O. Pankratz, L.M. Avila, C. Buxbaum, A. Seiler</i>	
31. Rating systems for counting buildings' environmental performance	754
<i>A.M. Papadopoulos, E. Giama</i>	
32. Applying the EP label tools for energy certification of buildings in Greece	759
<i>M. Papaglastra, M. Santamouris, R. Cohen</i>	
33. Pythagoras: An innovative training package on Indoor Environment Quality	763
<i>M. Papaglastra, M. Santamouris, E. Mouriki, A. Geranios, G. Mihalakakou, D. Matthopoulos, I. Deligiannakis, V. Tsezos, E. Doulka, A. Papadopoulos, E. Giama, A. Aristotelis, G. Stavrakakis, T. Nicolaou, D. Kolokotsa, S. Kephelopoulou, A. Katsoyiannis</i>	
34. The influence of the wind speed on the heat island phenomenon in Athens, Greece	767
<i>N. M. Papanikolaou, I. Livada, M. Santamouris</i>	
35. Improvement of the energy performance of greenhouses	771
<i>K. Pavlou, A. Sfakianaki</i>	
36. Study on the thermal performance of a solar chimney	774
<i>K. Pavlou, M. Santamouris</i>	
37. Study of a new photocatalytic air cleaner applied to the management of the microbiological indoor air quality	777
<i>P. Petinga, P. Petit, P.-J. Vialle, S. Delaby, E. Robine, E. Gehin</i>	
38. Refurbishment and monitoring of a print office building in Karlsruhe, Germany	782
<i>J. Pfafferott, D. Kalz, A. Wagner, T. Knapp</i>	
39. The Passivhaus standard in southern Europe	788
<i>A. Pindar, P. Zangheri, L. Pagliano, J. Schnieders</i>	
40. Analysis of the façades surface temperatures – Artificial neural networks application	792
<i>P. R. Pizarro, L. Chebel Labaki</i>	
41. Double skin façade glazed office buildings; a parametric study for optimized energy and thermal comfort performance	797
<i>H. Poirazis</i>	
42. Nightcooling: practical experiences in offices and the need for standard implementation into energy performance legislations	802
<i>I. Pollet, P. Renson</i>	
43. Comparison of energy load demand and thermal comfort levels in Athens, Greece and London, UK	806
<i>B. E. Psiloglou, C. Giannakopoulos, S. Majithia</i>	

44. An investigation into developing an urban climatic map for high density living—initial study in Hong Kong	811
<i>C. Ren, E. Ng, L. Katzchner</i>	
45. Categorising the existing Welsh housing stock in terms of heating and cooling demand and thermal storage capacity	818
<i>M. Rhodes, I. Knight, F. Agyenim</i>	
46. HVAC system for experimental research and educational applications	825
<i>F. Richieri, J. Blanc Gonnet, P. Michel, G. Guarracino</i>	
47. Performance of domestic ventilation systems: A simulation study	830
<i>I. Ridley, M. Davies, D. Mumovic, M. Orme, G. Pane, J. Palmer</i>	
48. Resilient hospital design: the zero carbon cooling challenge	835
<i>S. Roaf</i>	
49. The Minewaterproject Heerlen - low exergy heating and cooling in practice	839
<i>E. Roijen, P. Op 't Veld, E. Demollin-Schneiders</i>	
50. Sustainable recommendations for the faculty of technology of the University of Brasilia – Brazil	845
<i>M. Romero</i>	
51. Potential of passive design strategies using the free-running temperature	850
<i>L. Rosales, M. E. Hobaica, C. Ghiaus, F. Allard</i>	
52. Double enclosure: application for a commercial building in Athens, Greece	855
<i>V. Sagia</i>	
53. Residential active cooling toward snowy cold region in Japan and human temperature sensitivity for passive and low energy cooling	860
<i>M. Saito</i>	
54. Supervisory control of an intelligent building in Greece using EIB – KONNEX technology for energy performance improvement	865
<i>J. K. Sakellaris, P. Romanos, C. J. Koinakis</i>	
55. On the relation between the energy and social characteristics of the residential sector	870
<i>M. Santamouris, K. Kapsis, D. Korres, I. Livada, C. Pavlou, M. N. Assimakopoulos</i>	
56. Indoor air quality in fifty residences in Athens	876
<i>M. Santamouris, K. Argiroudis, M. Georgiou, K. Pavlou, M. Assimakopoulos, K. Sfakianaki</i>	
57. Data driven and fuzzy techniques for wind speed calculation inside urban canyons	880
<i>M. Santamouris, Ch. Georgakis</i>	
58. Aspects of CFD modeling of fan and pad evaporative cooling System in Greenhouses	885
<i>A. Sapounas, C. Nikita – Martzopoulou, T. Bartzanas, C. Kittas</i>	
59. State of the art on macroscopic models for the determination of thin films optical properties	889
<i>G. Saridakis, D. Kolokotsa, M. Santamouris</i>	
60. Natural ventilation and building low energy cooling as new culture for city planning design	894
<i>F. Sartogo, V. Calderaro</i>	
61. Estimation on the effectiveness of the cross ventilation as a passive cooling method for houses	899
<i>T. Sawachi, S. Nishizawa, H. Habara, H. Miura</i>	
62. EULEB – European High Quality Low Energy Buildings	904
<i>J. Schlenger, H. Müller</i>	
63. Interdisciplinary development of a modular façade system with decentralised building services	908
<i>H. G. Schuster, H. F.O. Mueller</i>	
64. User behavior in relation to his short- and long-term thermal background	913
<i>M. Schweiker, M. Shukuya</i>	
65. Control of temperatures in air-conditioned indoor spaces using reduced order model	919
<i>A. Sempey, C. Inard, C. Ghiaus, C. Allery</i>	
66. Reduced order model for air temperature control in indoor spaces	924
<i>A. Sempey, C. Inard, C. Ghiaus, C. Allery</i>	
67. Ventilation strategies for good indoor air quality and energy efficiency	929
<i>O. Seppänen</i>	
68. Bioclimatic design for cooling in Mediterranean buildings. The effectiveness of mass increase	936
<i>D. Serghides</i>	

69. On the selection of shape and orientation of a greenhouse for composite climates 941
V. P. Sethi
70. Analyzing air-tightness measurements using fan pressurization method on forty residential houses in Athens, Greece 946
K. Sfakianaki, K. Pavlou, M.N. Assimakopoulos, M. Santamouris, I. Leivada, N. Karkoulas, J. Mamouras
71. Energy and environmental rehabilitation of a listed neoclassic building in Athens, Greece 950
K. Sfakianaki, K. Vassilakopoulou, M.N. Assimakopoulos, K. Pavlou, P. Doukas, N. Gaitani, M. Santamouris
72. Investigating and analyzing the thermal behavior of the "green roof system" installed in two buildings in Athens, Greece 954
K. Sfakianaki, K. Pavlou, M. Santamouris, E. Pagalou
73. The combination of clay and nanotube carbon as an innovative and sustainable material 959
P. Shahmohamadi, F. Soflaee
74. Air distribution effectiveness for different mechanical ventilation systems 964
M. Sherman, I. S. Walker
75. Environmental effect of courtyard in sustainable architecture of Iran (Cold Regions) 969
(Case study: courtyard houses in Tabriz)
M. Shokouhian, F. Soflaee, F. Nikkhah
76. Research and development with full scale research dwellings 974
N.C. Sijppeer, E.J. Bakker, R. Schuitema, F.A.T.M. Ligthart, I.J. Opstelten
77. Floor cooling and air-cooling, the effects on thermal comfort of different cooling systems 977
N.C. Sijppeer, E.J. Bakker, R. Schuitema, F.A.T.M. Ligthart, I.J. Opstelten
78. Evaluation of the thermal behavior of two systems of ceilings: reinforced concrete and wather layer 981
A.C. Silva, E. M. V. Matos, N. R. A. J. Cabral, G. C. Nolasco, J. L. J. Albores
79. Climatic Responsive Architecture of Tabriz 984
M. Singery, S. M. Mofidi
80. Environmental effect of courtyard in sustainable architecture of Iran (Hot-arid regions, meso-climate BWks) 988
(Case study: courtyard houses in Isfahan & Kerman)
F. Soflaee, M. Shokouhian
81. The effect of plant use on the reduction of volatile organic compounds for environmental improvement 995
J.E. Song, J.Y. Sohn, Y.S. Kim
82. Refrigeration in open spaces by means of evaporative systems 1000
S. Soutullo, C. San Juan, R. Olmedo, R. Enriquez, S. Palero, J.A. Ferrer, M^a.R. Heras
83. Urban heat islands and electrical energy consumption in a Brazilian city 1005
L.C. L. Souza, C. P. Postigo, A. P. Oliveira, C. M. Nakata
84. Comparative studies on different type of roof ponds for cooling purposes: literature review 1009
A. Spanaki
85. A heat island study of Athens using high-resolution satellite imagery and measurements of the optical and thermal properties of commonly used building and paving materials 1016
M. Stathopoulou, A. Synnefa, C. Cartalis, M. Santamouris, H. Akbari H.
86. Utilizing simulation to predict natural ventilation and wind flow 1021
M. Tahsildoost, N. Deldar
87. Accuracy of a neural network for the prediction of wind pressure coefficient 1029
M. Tajima, T. Sawachi
88. Knowledge extraction from energy certification of buildings – Results from the ENPER-EXIST project 1034
K. E. Thomsen, K.B. Wittchen, O. M. Jensen, S. Aggerholm
89. Visualization of air conditioning and ventilation processes: The apperiance of humid air diagram within a short period at three distant places on a globe 1038
B. Todorovic
90. Building integrated PV water heating and air conditioning in the special hospital of the SPA Rusanda 1042
M. Todorović, O. Ećim, I. Zlatanovic

91. Reflections on the skins of different objects and the use of climate modifiers	1049
<i>A. N. Tombazis</i>	
92. Design aspects and perspectives for solar control of buildings with aesthetic and efficient solar thermal collectors and photovoltaics	1052
<i>Y. Tripanagnostopoulos, M. Tripanagnostopoulou</i>	
93. Energy performance and energy rating procedures of buildings in Southern Europe	1057
<i>A. Tsave, T. Nikolaou, D. Kolokotsa, D. Dasenakis, N. Zografakis</i>	
94. Sustainable master planning and urban design for the "buffer zone" of Nicosia	1061
<i>A. Tsolaki, A. Trombadore, M. Santamouris</i>	
95. Daylight and luminaire control in a perimeter zone using an automated venetian blind	1065
<i>A. Tzempelikos, B. O'Neill, A. Athienitis</i>	
96. The impact of shading on thermal comfort conditions in perimeter zones with glass facades	1072
<i>A. Tzempelikos, M. Bessoudo, A. Athienitis, R. Zmeureanu</i>	
97. Air to air heat recovery: assessment of temperature efficiency	1078
<i>P. Van den Bossche, C. Delmotte, L. Vandaele, D. Van Orshoven</i>	
98. Policy instruments to promote sustainable summer comfort in buildings	1083
<i>M. Varga, K. Leutgöb, L. Pagliano, P. Zangheri, R. Cavelius</i>	
99. Cooling effect of PCM inserted in the walls: non linear phenomenon analysis	1088
<i>J. Virgone, J.-J. Roux, F. Kuznik, J. Noël</i>	
100. Energy multiplier	1093
<i>T. Vucetic</i>	
101. A convenient coupled simulation method for thermal environment prediction in naturally ventilated buildings	1097
<i>L. Wang, N. H. Wong</i>	
102. Discussion of strategies for UK zero energy building design	1103
<i>L. Wang, J.A. Gwilliam</i>	
103. Monitoring and simulation of two operational buildings integrating active thermal mass strategies	1109
<i>D.J. Warwick, A.J. Cripps, M. Kolokotroni</i>	
104. Innovative cooling method in a school environment.	1114
<i>H. Wigö</i>	
105. Measuring the luminance and chromaticity distribution of the sky	1117
<i>R. Wilkins</i>	
106. GIS-based and computer simulation evaluation on NUS campus master plan	1121
<i>N. H. Wong, S. K. Jusuf</i>	
107. GIS-based urban heat island study in University campus	1127
<i>N. H. Wong, S. K. Jusuf</i>	
108. Assessment of innovative systems/technologies in the context of EPBD regulations (illustrated with the assessment of an innovative ventilation system in the Belgian context)	1132
<i>P. Wouters, N. Heijmans, A. Janssens, N. Van Den Bossche, S. Roels</i>	
109. Pressure-drop and energy-saving analysis of TBAB clathrate hydrate slurry as a latent heat transportation media	1137
<i>R. Xiao, S.H. He, C. Huang, Z.P. Feng</i>	
110. The impact of exterior environmental comfort on residential behaviour from the insight of building energy conservation: a Case study on lower Ngau Tau Kok estate in Hongkong	1141
<i>Y. Xiong</i>	
111. Dynamic structures	1146
<i>S. Yannas</i>	
112. Measurement method of multi-zone air flow rate using human expiration	1152
<i>H. Yoshino, M. Fujikawa, R. Takaki, H. Okuyama, M. Hayashi, M. Sugawara</i>	
113. Case study of the weighed factors of stack effect and the reduction alternatives in tall complex building	1157
<i>J.Y. Yu, D.W. Cho, K.H. Yu, K.D. Song</i>	
114. Estimation of outdoor illuminance for passive solar architecture in Malaysia	1163
<i>A. Zain-Ahmed, H. Omar, M.Y. Alwi, M. Omar, S. Ahmed</i>	

115. Energy towers 1167
A renewable energy technology for producing electricity and desalinated water in arid climates
D. Zaslavsky, R. Guetta, S. Hassid
116. Ventilation of Dutch schools presently insufficient; an integral approach to improve design 1172
W. Zeiler, G. Boxem
117. Field study on the performance of hybrid ventilation with HRHC in schools 1177
W. Zeiler, G. Boxem, R. Scholten
118. An integral approach to façades: a conceptual comparison between different types of facades 1182
W. Zeiler, J. Verdonshot, G. Boxem
119. Simulation of a solar absorption cooling system 1187
G. Zidianakis, Th. Tsoutsos, N. Zografakis
120. A simplified tool for the energy certification of Italian existing dwellings. Comparative and sensitivity analyses 1195
M. Zinzi, B. Barozzi, L. Danza, R. Lollini
121. Properties and performance of an innovative reflective painting to reduce the cooling loads in buildings and mitigate the heat island effect in urban areas 1200
M. Zinzi, G. Fasano, E. Manilia

Sustainability assessment of an energy efficient optimized solution

R. Mateus, S. Silva, L. Bragança, M. Almeida, P. Mendonça

University of Minho, Portugal

P. Silva

Company DST, Portugal

ABSTRACT

In order to overcome the increasing energy demand in buildings and related environmental problems, new efficient energy technologies and new integrated building concepts, like solar passive and mixed-weighted thermal mass buildings, are being developed. The energy efficiency should not be the only parameter to consider in high-performance building design. Other parameters related to the three dimensions of the Sustainable Development (environment, economy and society) should also be considered, in order to obtain higher performance and more sustainable buildings.

The aim of this work is to assess the sustainability of a non-conventional solution using the methodology MARS-SC. The input parameters will be evaluated using energy simulation tools and experimental measurements. The study will focus on the performance comparison between a mixed-weight thermal mass test cell and a conventional one.

1. INTRODUCTION

Construction industry is one of the most important EU economical sectors, but it still relies too much on traditional construction methods and unskilled workmanship, being characterised by an excessive use of natural resources and energy.

This conflict between economic development and the environment lead to a state of environmental urgency. The building sector in the EU is responsible for 40% of the final energy demand and 1/3 of the greenhouse gases emissions. Globally, building sector accounts for 25% of wood, 40% of aggregates and 16% of water consumed worldwide (Dimson, 1996). This figures shows the large responsibility of building sector in the environmental pollution.

Different measures are necessary in order to improve the compatibility between buildings and the three dimensions of sustainable development.

Having this challenge in mind, it is during design phase that the sustainable building concepts should be applied, through the implementation of a strategic com-

bined action that makes possible the reduction of the environmental impact by a judicious selection of materials, technologies and construction methods to be used. Analysing the evolution of the construction technologies, mainly in Portugal, it is possible to conclude that, in spite of some relative improvements on structural safety, the average construction mass of a housing building is very similar to 50 years ago. Although the environmental impacts per square metre have increased, building components reuse and recycling potential have significantly decreased (Mendonça, 2005).

More rational building processes can be implemented with the introduction of technologies that allow the reduction of mass in the construction. Such reduction becomes possible through the use of lightweight components, heavy insulated envelopes and punctual use of heavyweight materials for structural and anchorage functions or thermal storage. Besides that, the use of prefabricated modular systems that doesn't require cranes and other heavyweight equipment to build and that have small energy costs during transport and low embodied energy and environmental impacts should also be taken into account and selected, in most of the cases. This approach can therefore be associated to a better rationalisation of resources in construction.

In order to study the advantages of a mixed-weight housing principle that uses low embodied energy and environmental impact materials and to compare it with the conventional technology, two test cells were built (Fig. 1) in the Laboratory of Building Physics and Technology of the University of Minho (LFTC-UM). In this study it will be assessed and presented some environmental, social and economic advantages of a non-conventional design approach.

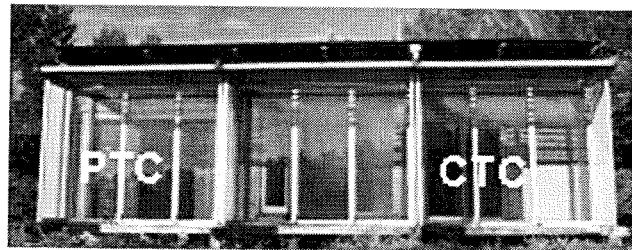


Figure 1. Test Cells.

2. DESCRIPTION OF THE BUILDING SOLUTIONS

2.1 Conventional Test Cell (CTC)

The CTC, as shown in Figure 2, contains three compartments. The CTC was built with a cavity hollow brick envelope wall with insulation on the air gap. This Test Cell represents the conventional Portuguese construction solution.

2.2 Proposed Test Cell (PTC)

The PTC, as shown in Figure 3, contains two compartment rooms. The compartment room 1 was built using compacted earth walls, in order to improve the environmental performance of the solution. The high thermal inertia combined with a south opening (equipped with exterior horizontal and vertical shading devices) is a passive solar solution. The compartment room 2 is a lightweight construction with insulation and a double glass window (1.4h x 0.4w m) in the north façade in order to promote daylighting and thus reduce the energy consumption with lightning.

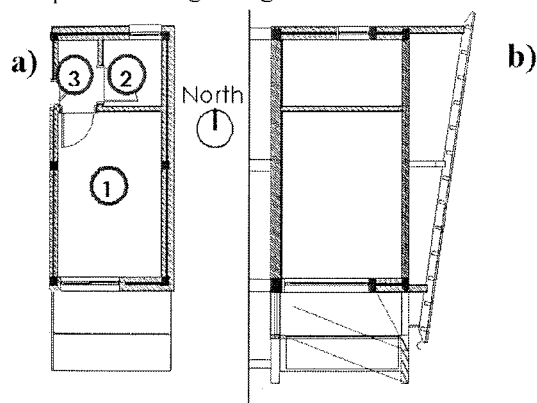


Figure 2. CTC drawings; a) floor plan; b) cross-section.

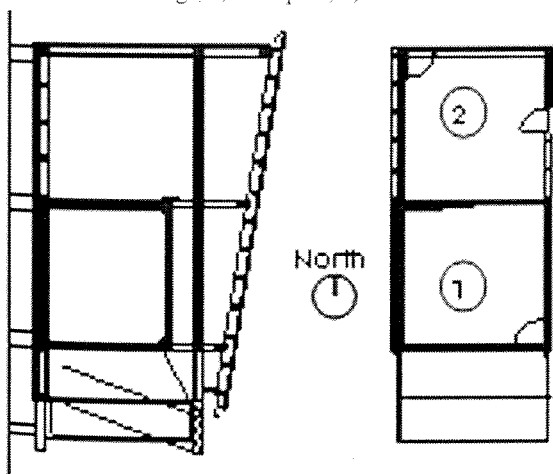


Figure 3. PTC drawings; a) floor plan; b) cross-section.

Both Test Cells were equipped with Sunspaces, in order to implement an indirect solar gain strategy

3. SUSTAINABILITY ASSESSMENT

The sustainability will be assessed considering some parameters related with the three dimension of the sustainable development. The parameters that will be used to compare the two solutions are presented in Table 1.

Table 1: Sustainability parameters

Dimensions		
Environmental	Societal	Economy
Global Warming Potential (GWP)	Summer thermal comfort (STC)	Construction costs (CC)
Acidification Potential (AP)	Winter thermal comfort (WTC)	Operating costs (OC)
Eutrophication Potential (EP)	Visual comfort (VC)	
Fossil Fuel Depletion Potential (FFDP)	Acoustic comfort (AC)	

3.1 Quantification of the parameters

i) Environmental dimension

Many of the environmental impacts in buildings are related to the materials and products' embodied energy and to the operating energy consumptions. The higher is the energy consumption during the raw materials extraction, processing and transport, and during building operations, the greater are the buildings' life-cycle environmental impacts.

The amount of energy needed to process the materials, their assembly in construction site, maintenance and demolition, can vary from 6 to 20% of the total energy consumed in building life-cycle. The major part of this value is linked to the materials Primary Energy Consumption (PEC) – energy resources spent for materials production, including the energy directly related to the raw materials extraction, their processing and the energy needed for the transportation (Berge, 2000).

Selecting lightweight materials generally results on smaller embodied environmental impacts. Besides that, other important achievements are the reduction of noise, dust and waste productions during extraction, transportation, building and dismantling or demolishing.

In general, the maximum use of local and less-transformed raw materials or recycled ones means reduction of embodied energy.

The assessment of the total embodied energy in building materials is one of the dimensions to consider in the environmental performance evaluation. Table 2 presents the construction mass (CM) and the embodied Primary Energy Consumption (PEC) of both test cells.

Comparing the results it is possible to see that the CTC's mass is 67% higher than the PTC's mass and that the embodied PEC in CTC is almost 88% higher than in PTC.

Some of the most important environmental impacts that are related to the energy consumption are: Global Warming Potential (GWP), Acidification Potential (AP), Eutrophication Potential (EP) and Fossil Fuel Depletion Potential (FFDP). Table 3 presents the results found in the assessment of these parameters for both solutions. In Portugal, until now, there isn't a local life-cycle inventory (LCI) database related to building materials; therefore the results are based in values collected by Berge for central Europe (Berge, 2000).

Table 2. Construction mass (CM) and embodied primary energy (PEC) of both test cells (CTC & PTC).

	CTC		PTC	
	CM (kg)	PEC ⁽¹⁾ (kW.h)	CM (kg)	PEC ⁽¹⁾ (kW.h)
Foundations	7211	2758	7211	2758
Floor	10194	4661	7010	3800
Walls ⁽²⁾	17702	27917	9798	13526
Ceiling	8890	3669	5474	2604
Roof	1200	2255	1200	2255
Total	45198	41260	30694	24943
Total/m ² ⁽³⁾	3013	2751	1806	1467

¹Results based in life-cycle inventory values for Central Europe (Berge, 2000).

²Includes doors and windows

³This value is per net square meter

Table 3. Environmental impacts related to the materials and products used in the CTC and PTC.

Test Cell	Environmental impacts			
	GWP ⁽¹⁾ (g.10 ³ /m ²)	AP ⁽²⁾ (g.10 ³ /m ²)	EP ⁽³⁾ (g.10 ³ /m ²)	FFDP ⁽⁴⁾ (MJ/m ²)
CTC	631	6	57	1135
PTC	366	3	28	606

¹Global warming potential in grams CO₂ equivalents.

²Acidification potential in grams SO₂ equivalents.

³Eutrophication potential in grams N equivalents.

⁴Fossil fuel depletion potential in surplus MJ per functional unit of product. This value is according to the Portuguese primary energy supply structure.

Another important source of environmental impacts that takes place during construction and demolition phases is the production of pollutant gases. Many of these gases results from the fossil fuel combustion during building's materials, elements and residues transportation.

As higher is the distance of transportation, greater are the energy consumption and related environmental impacts. In Portugal the most used way of transportation in building processes is the diesel truck. The distance of transportation of building materials is difficult to evaluate due to the global scale market. Although, a recent survey made in the Portuguese construction market showed that the average distance of transportation from suppliers to construction site is about 50km (Oliveira, 2003). Table 4 shows the energy consumption and air pollutant emissions considering the average 50 Km of

materials transportation.

Table 4. Air pollutant emissions and primary energy consumption during transportation from suppliers to construction site (Energy Research Group 1999).

	Emissions (g/t.km)	CTC	PTC
		Emissions (g/m ²)	Emissions (g/m ²)
		Energy (kW.h/m ²)	Energy (kW.h/m ²)
CO ₂	207	31186,62	18687,23
CH ₄	0,3	45,20	27,08
NO _x	3,6	542,38	324,99
CO	2,4	361,58	216,66
VOCs	1,1	165,73	99,30
Energy	0,8	121,7	72,9

The environmental impacts related to the energy consumption and air pollutants emissions during transportation phase are presented in Table 5.

Table 5. Environmental impacts related to the materials and products transportation from suppliers to construction site.

Test Cell	Environmental impacts			
	GWP ⁽¹⁾ (g.10 ³ /m ²)	AP ⁽²⁾ (g.10 ³ /m ²)	EP ⁽³⁾ (g.10 ³ /m ²)	FFDP ⁽⁴⁾ (MJ/m ²)
CTC	193	28	0,02	62
PTC	116	17	0,01	37

¹Global warming potential in grams CO₂ equivalents.

²Acidification potential in grams SO₂ equivalents.

³Eutrophication potential in grams N equivalents.

⁴Fossil fuel depletion potential in surplus MJ per functional unit of product.

Besides the embodied environmental impacts, the environmental impacts related to the energy consumption during operation phase are accessed. In this case, it will only be considered the GWP since there isn't any Portuguese's LCI data related to the other parameters. Data shows, according to the Portuguese energy mix, that 500 grams CO₂ equivalents are produced per each kW of delivered energy. In this way and according to the results obtained in the energy simulations (Table 8) the GWP related to the operational energy use is: 3547 g.10³/m² for CTC and 3217 g.10³/m² for PTC.

Results of the environmental assessments show that CTC has higher environmental impacts than PTC, due to the CTC's higher construction mass and operational energy demand.

ii) Social dimension

The most important parameters to evaluate the buildings indoor environment are the thermal comfort, the visual comfort and the acoustic comfort.

The most used parameters to assess the thermal comfort are the PMV – Predicted Mean Vote and the PPD – Predicted Percentage Dissatisfied (Fanger, 1982). Table 6 presents the PMV and PPD of the PTC and of the CTC calculated according to ISO 7730.

Table 6. Thermal comfort of the Test Cells.

Test Cell	Winter		Summer	
	PPD (%)	PMV	PPD (%)	PMV
CTC	80,8	-2	6,8	0,2
PTC	77,3	-2	7,7	0,3

For the summer period the thermal comfort is better in CTC, however for the winter period the PTC has a better performance than the CTC.

The natural lightning performance evaluation was carried out using the software tool Desktop Radiance. The Illuminances (lux) where estimated for two critical dates: 21 December – the winter solstice and 21 June – the summer solstice. The results are presented in Figures 4 and 5. Figures 4 and 5 show a better daylighting distribution in PTC and also an excessive illuminance in CTC that should force the occupants to close the blinds. In one hand, this situation will reduce the solar heat gains and in the other hand it will increase the use of artificial lightning. The acoustic comfort was evaluated using only the façade's airborne sound insulation index (R_{45}). The results are based in "in-situ" measurements that follow the ISO 140 and 717 Standards. The results are presented in Table 7. As the acoustic insulation is directly related to the mass of the solution, the CTC has a better performance, even though the PTC has a very similar performance.

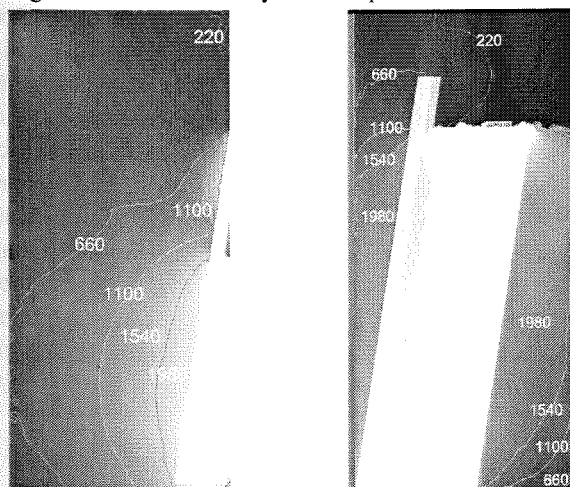


Figure 4. Illuminances on winter solstice with clear sky (isolines in lux) (12h) – PTC (left); CTC (right).

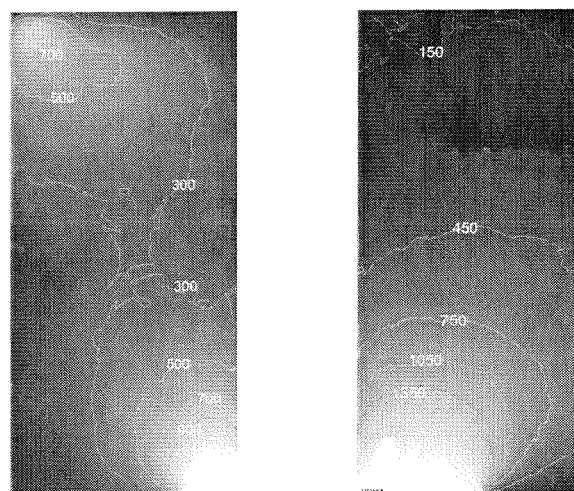


Figure 5. Illuminances on summer solstice with clear sky (false color) (12h) – PTC (left); CTC (right).

Table 7: Noise insulation of façades measured "in situ".

Test Cell	R_{45} (dB)
CTC South Façade	30
CTC East Façade	47
PTC South Façade	34
PTC West Façade	41

iii) Economic dimension

From the economic point of view the most important aspects are the construction cost and the energy consumption cost in the buildings' whole life-cycle. The construction cost was obtained directly from the construction company that built the Test Cells. However, as there is no heating or cooling system installed in the Test Cells, the energy consumption was obtained using a simulation tool – VisualDOE.

In order to achieve a good precision in the simulation, it was necessary to calibrate the model of the Test Cells used in the simulation tool. This task was done using: i) a climatic file created specifically for this test; ii) envelope thermal resistance calculated "in-situ"; iii) matching up the interior temperature measured "in situ" with the one calculated by VisualDOE (Silva, 2006).

The heating and cooling set points used for the HVAC system in VisualDOE were the ones recommended by the Portuguese thermal regulation – 20°C for winter and 25°C for summer. The results of the simulation are presented in Table 8.

Table 8: Energy consumption for the Test Cells.

Test Cell	Energy consumption (kwh/m ² .year)	
PTC	Heating	102,1
	Cooling	26,6
	Total	128,7
CTC	Heating	126,8
	Cooling	15,1
	Total	141,9

The energy consumption cost was calculated for a life

span of 50 years and with an inflation rate of 2,5%. In order to convert the Energy consumption in Product cost (energy cost) it was applied the tax stipulated by the Portuguese electricity provider – EDP – 0.1107 €/kWh. Table 9 shows that the total cost of the CTC is 11% higher than the PTC, mostly due to higher heating needs.

Table 9: Economic dimension of the Test Cells.

Test Cell	Energy Cost in life span (€/m ²)	Construction Cost (€/m ²)	Total Cost (€/m ²)
CTC	805	1267	2072
PTC	730	1111	1841

3.2 Representation and global assessment

The global assessment is done using the methodology for the relative sustainability assessment of building solutions (MARS-SC) that was developed in order to support the design teams in sustainability assessment of new buildings (Mateus, 2006). This methodology compares the performance of the solutions under analysis to the performance of the conventional solution within the three dimensions of the sustainable development. In the assessment are considered the parameters presented in Table 1 and the weights presented in Table 10.

Table 10: Weights considered in the assessment.

Dimension	Parameter	Parameter's weight (%)	Dimension's Weight (%)
Environmental	GWP	49,9	30
	AP	16,7	
	EP	16,7	
	FFDP	16,7	
Social	TC	33	50
	VC	33	
	AC	33	
Economic	TC	100	20

Table 11 resumes the results found in the sustainability assessment of both test cells. Figure 6 presents the sustainable profile of both solutions.

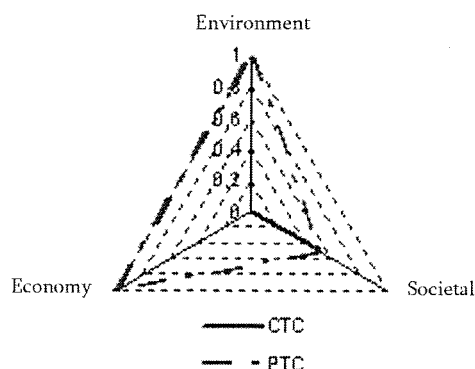


Figure 6 – Sustainable profile of both solutions.

Table 11: MARS-SC results.

Solution	Dimension			Sustainable Score (SS)
	Environ. (I _{Env})	Soc. (I _{Soc})	Econ. (I _{Eco})	
CTC	0,0	0,5	0,0	0,25
PTC	1,0	0,5	1,0	0,75

Even without using the methodology MARS-SC, the clear cut results obtained in the quantification of parameters, shows that the most sustainable solution is the PTC. This solution is the one that best compromises the three dimensions of the sustainable development. PTC's limitations are only linked to societal parameters. The lower PTC's construction mass contributes to the lower airborne sound insulation of the external envelope. The worst summer thermal performance of PTC can be explained by the lowest thermal inertia and an unfavourable orientation. The proposed solution (PTC) is also easy to dismantle and almost of its materials have high reuse and recycling potential, especially if compared to the most common construction system used in Portugal nowadays – reinforced concrete structure with clay hollow brick walls and concrete floors (CTC).

4. CONCLUSIONS

Project teams have big responsibilities in searching the sustainability in the building and real estate sectors, through the selection and use of building solutions with improved environmental, functional and economical performances, during their whole life-cycle. The development and use of building sustainability assessment methods and tools are fundamental aspects for those goals. This paper shows the potentialities associated with the use of lightweight materials combined with locally available thermal mass materials, in order to achieve a more sustainable construction.

REFERENCES

- Berge, B. (2000). *Ecology of building materials*. Oxford: Architectural Press.
- Dimson, B. (1996). Principles and Challenges of Sustainable Design and Construction. *Industry and Environment* 19, no. 2 (April-June).
- Fanger, P. O. (1982). *Thermal Comfort*. Malabar (Finland): Robert E. Krieger Publishing Company.
- Mateus, R., Bragança, L. (2006) *Tecnologias Construtivas para a Sustentabilidade da Construção*. Porto: Edições Ecoply.
- Mendonça, P. (2005). Living under a second skin. Ph.D diss., University of Minho, Civil Engineering Department, Guimarães, Portugal.
- Oliveira, A., Bragança, L., Mateus, R. (2003). Inquérito Nacional acerca da sustentabilidade ambiental da construção. PI, University of Minho.
- Silva, P., Mendonça, P., Bragança, L. and Almeida, M. (2006). Sustainable Test Cell – Performance Evaluation. *Healthy Buildings 2006*, vol. 5: 247-252.