

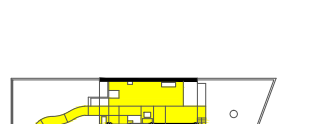
5 COBERTURA JARDIM



4 "EXTENSÕES" DOS EDIFÍCIOS NO PARQUE



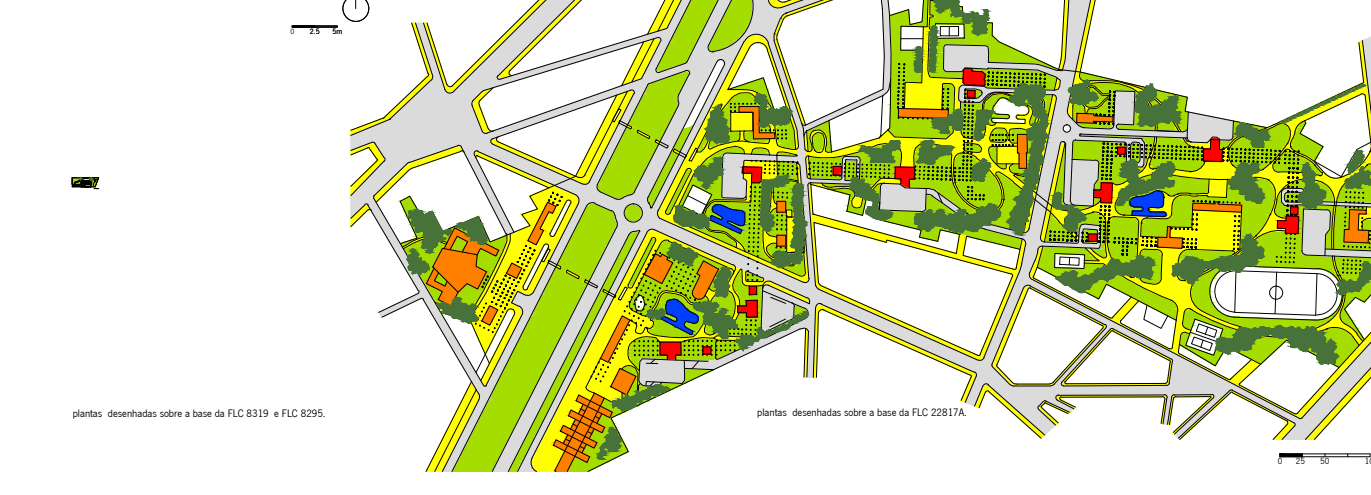
3 SEPARAÇÃO DE CIRCULAÇÕES



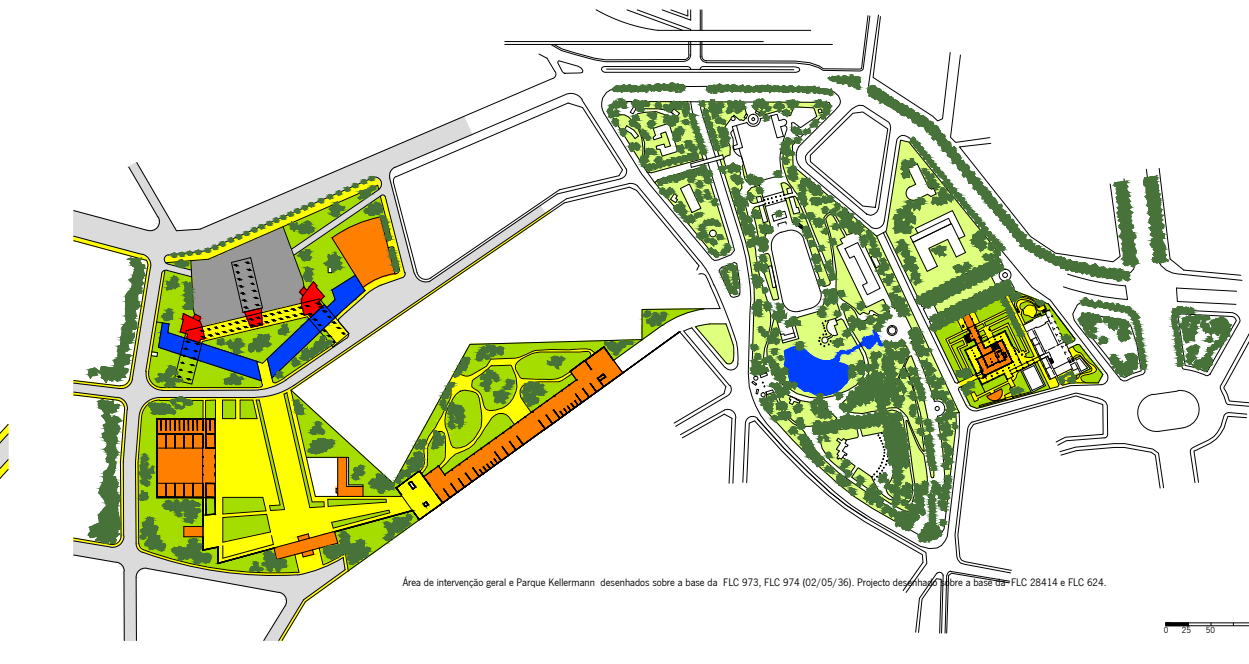
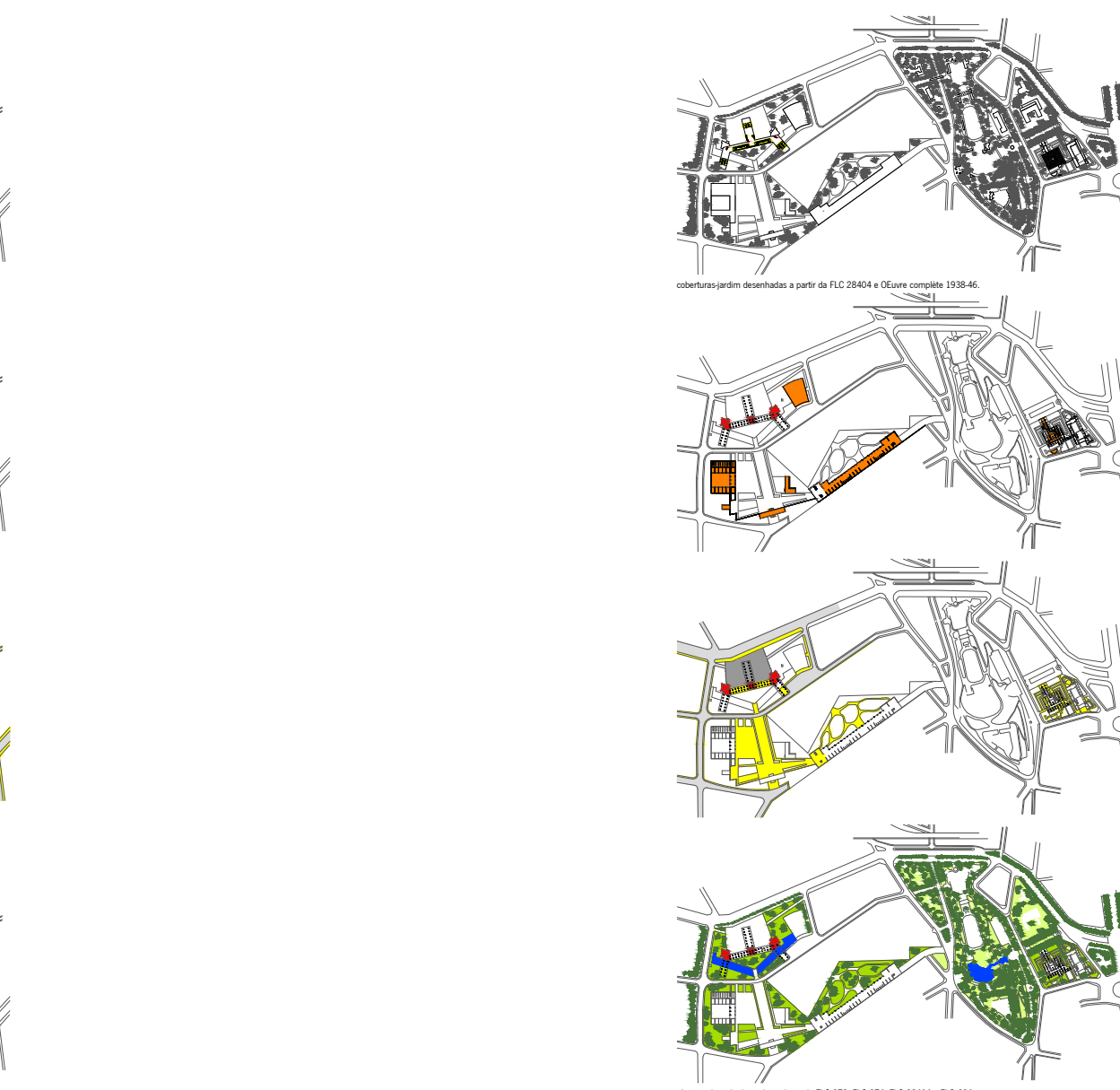
2 PARQUE CONTÍNUO



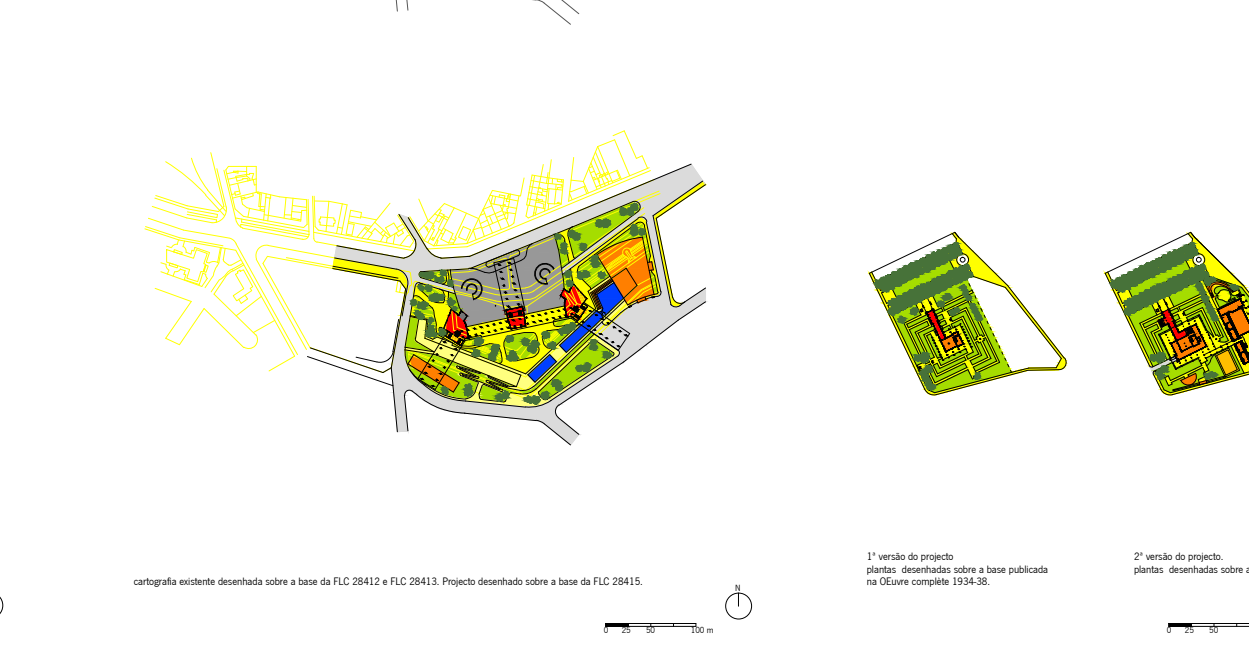
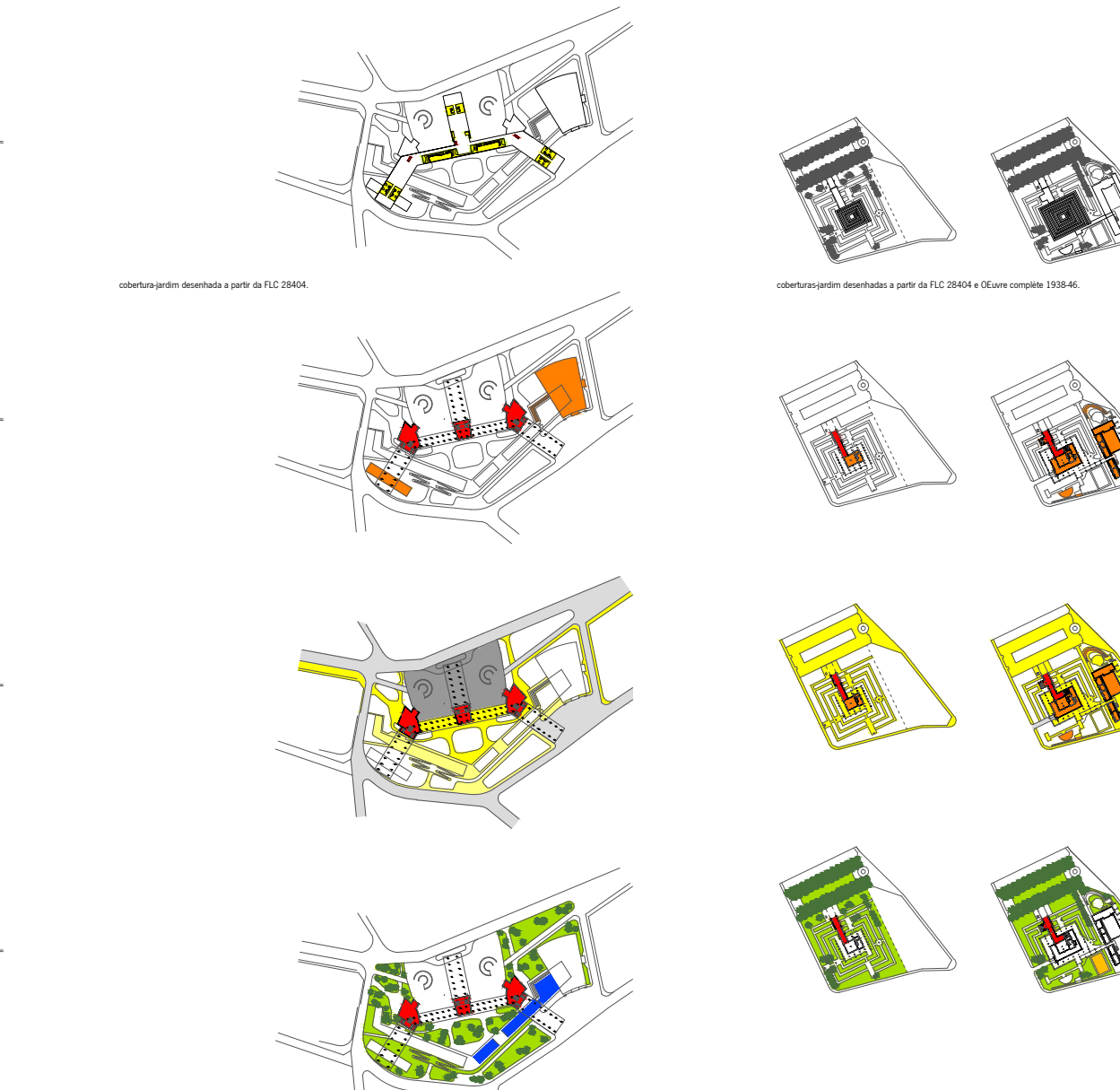
1 LIBERTAÇÃO DE SOLO



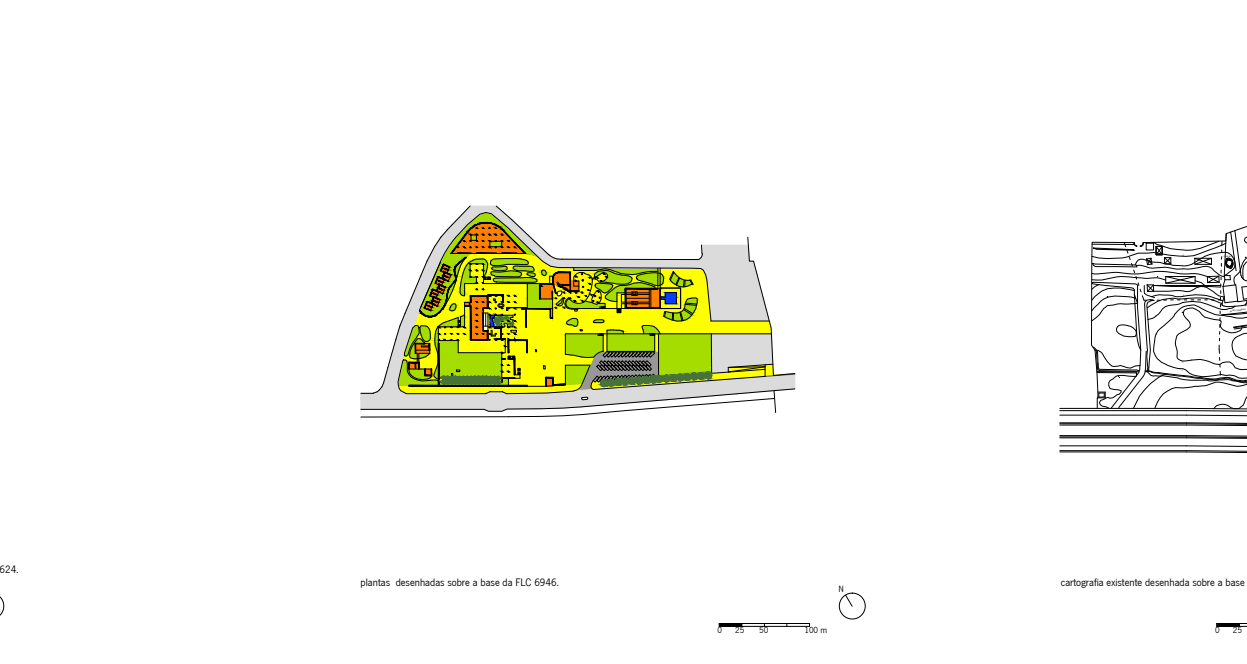
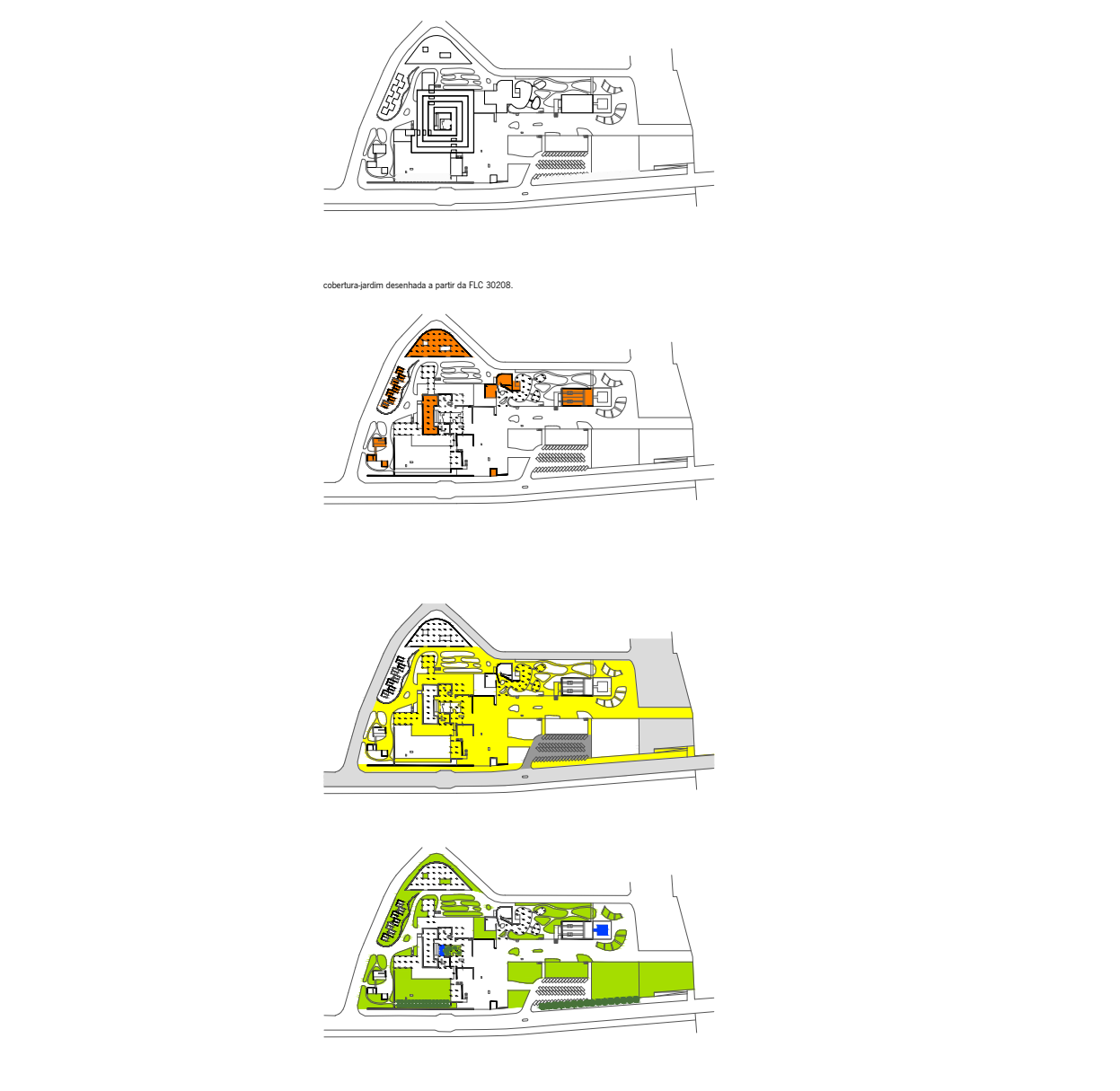
1926



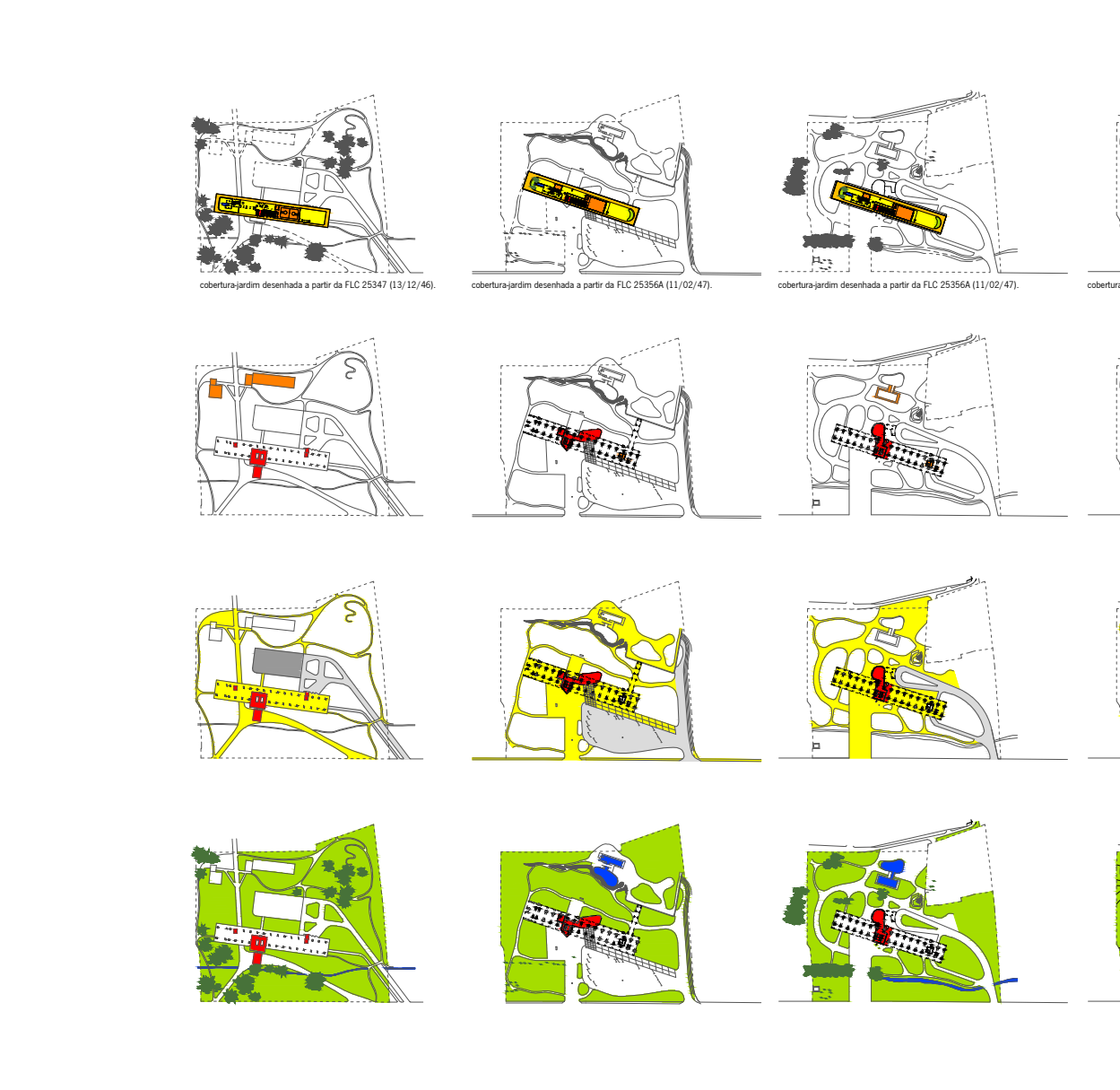
1936



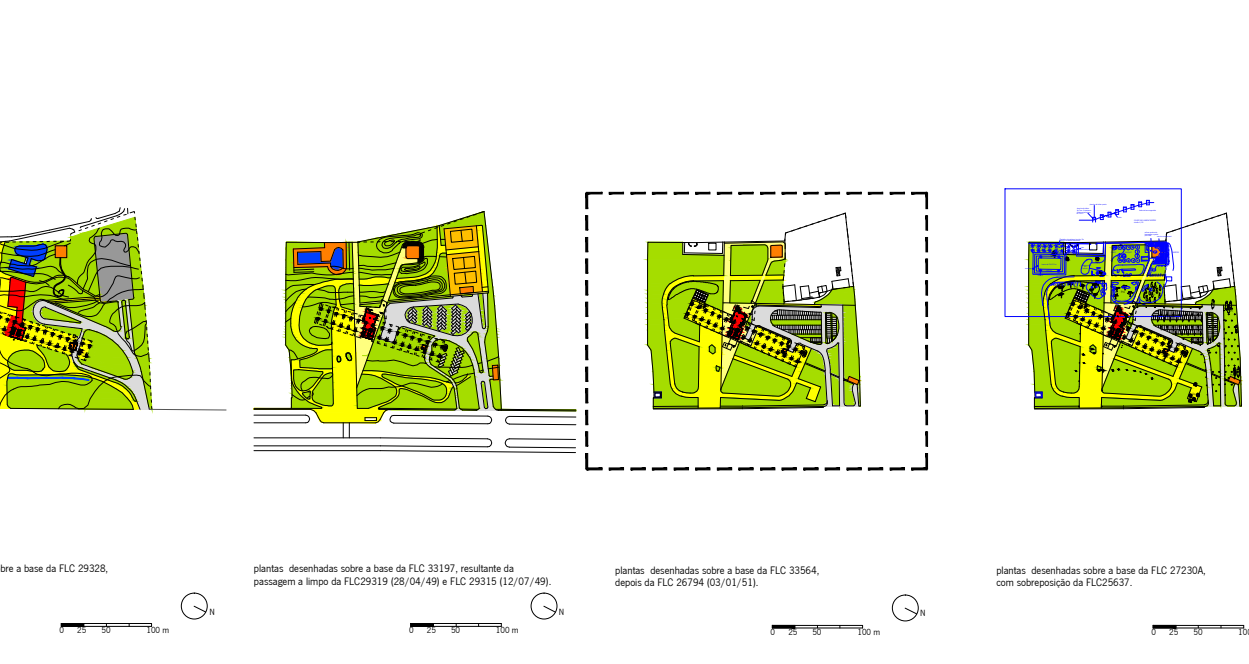
1934-36



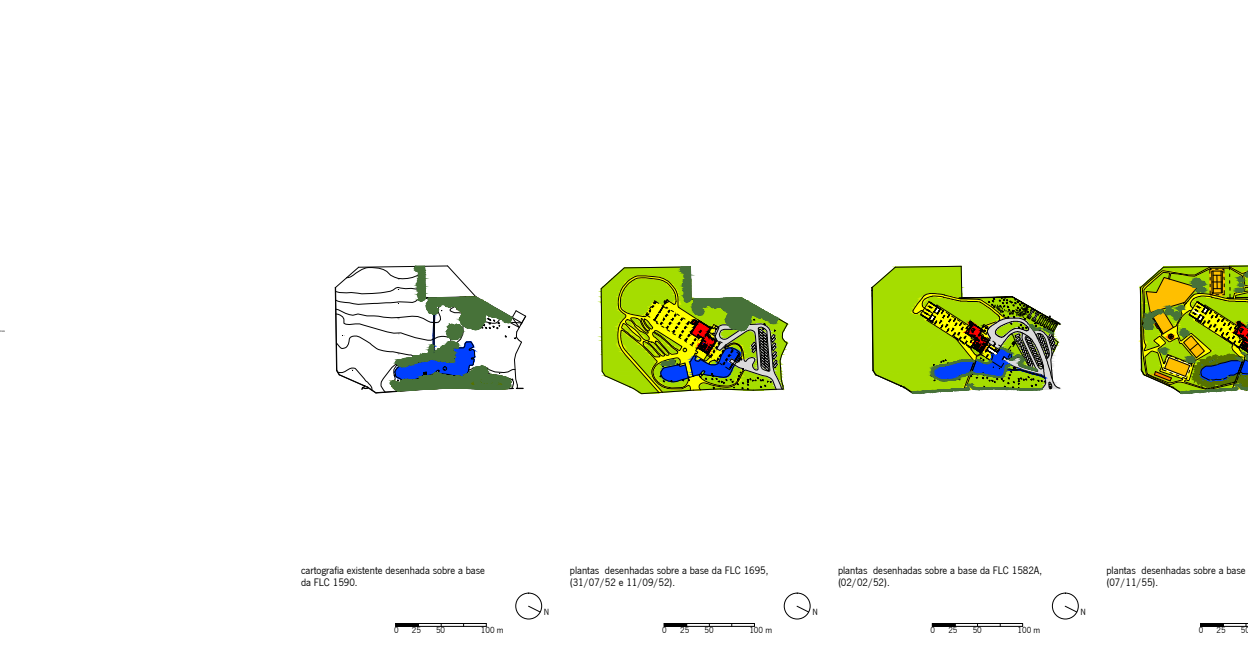
1936



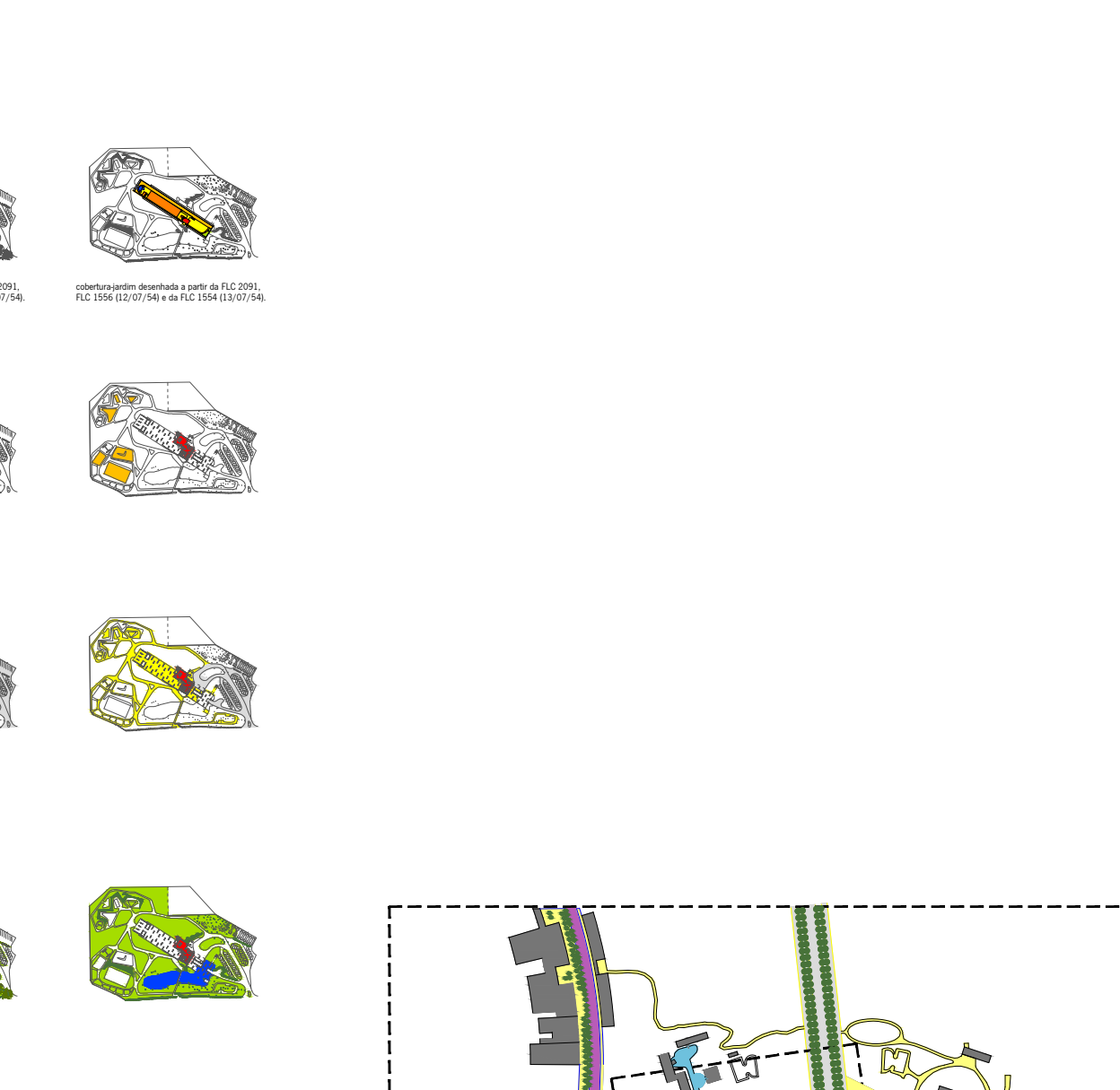
1953



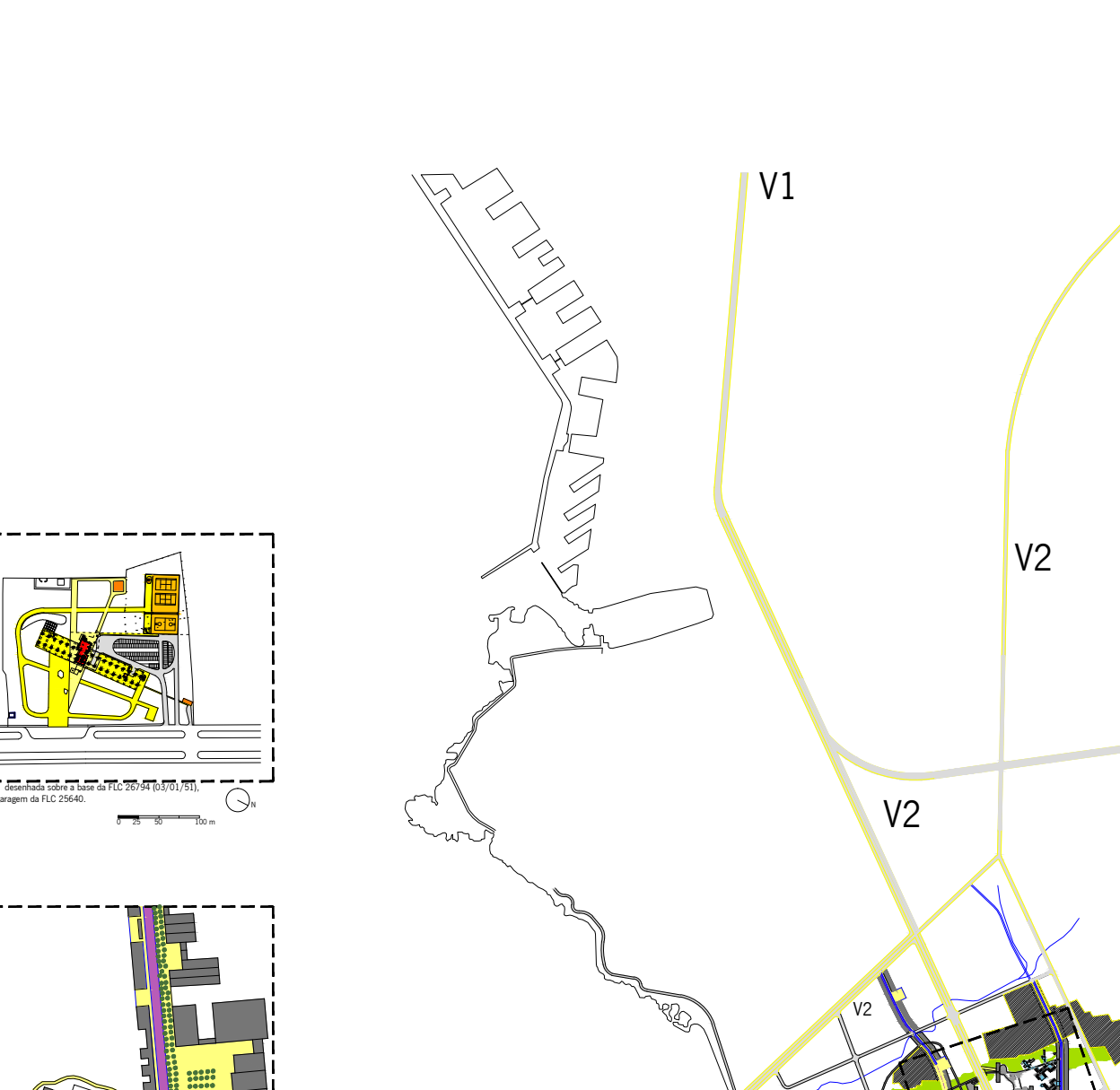
1946



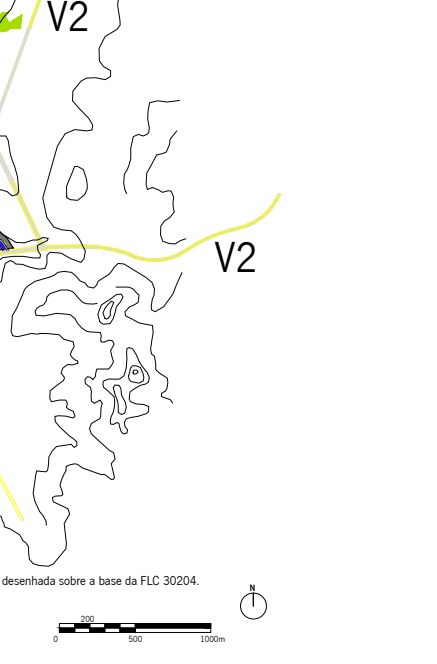
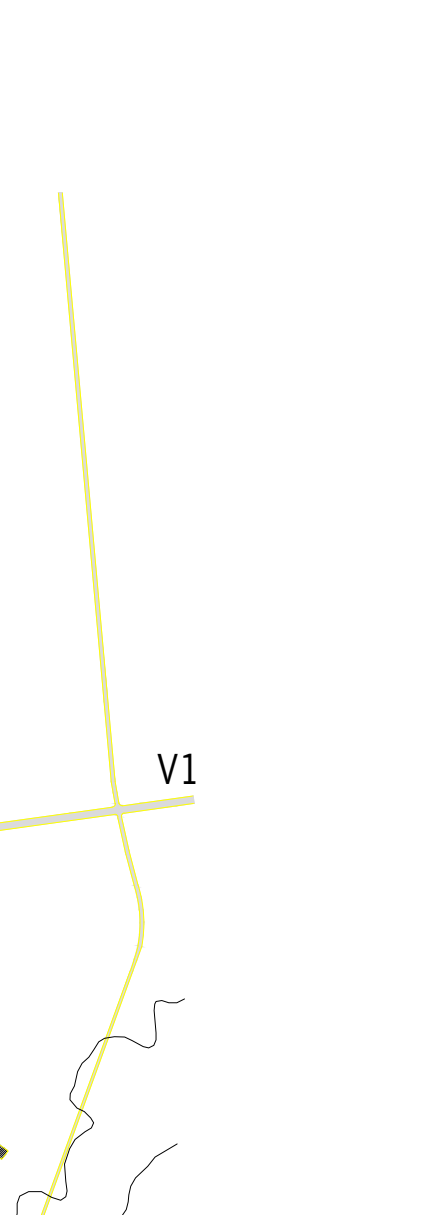
1947



1948



1949



1951



1952



1955



1956



1951



1951

226. Le Corbusier, Villa Cook, Boulogne-sur-Seine, 1926: plantas de solo (desenhos da autora).

227. Le Corbusier, Ilot Insalubre n°6, Paris, 1934-37: plantas de solo (desenhos da autora).

Le Corbusier, Bastion Kellermann e Centre d'Esthétique Contemporaine, Paris, 1934-37: plantas de solo da intervenção geral dos dois projectos (desenhos da autora).

228. Le Corbusier, Bastion Kellermann, Paris, 1934-36: plantas de solo (desenhos da autora).

229. Le Corbusier, Centre d'Esthétique Contemporaine, Paris, 1936: plantas de solo (desenhos da autora).

230. Le Corbusier, Musée d'Armedabad, India, 1952: plantas de solo (desenhos da autora).

231.1. Le Corbusier, Unité d'habitation de Marseille, 1945-51: plantas de solo de várias fases (desenhos da autora).

232. Le Corbusier, Unité d'habitation de Nantes, 1949-56: plantas de solo de várias fases (desenhos da autora).

231.2. Le Corbusier, Urbanisation de Marseille-Sud, 1951: plantas de solo de várias fases (desenhos da autora).

Le Corbusier, Plan d'Urbanisation de Marseille-Sud, 1951: plantas de solo de várias fases (desenhos da autora).