

3. Solsona JF, Díaz Y, Vázquez A, Pilar Gracia M, Zapatero A, Marrugat J. A pilot study of a new test to predict extubation failure. *Crit Care*. 2009;13(2):R56, 14.
4. Yang KL, Tobin MJ. A prospective study of indexes predicting the outcome of trials of weaning from mechanical ventilation. *N Engl J Med*. 1991;324(21):1445–50.
5. Díez-Picazo LD, Barrado-Muñoz L, Blanco-Hermo P, Barroso-Matilla S, e Ramirez SE. La capnografía en los servicios de emergência médica. *SEMERGEN*. 2009;35(3):138–43.
6. Rasera CC, Gewehr PM, Domingues AM. PET(CO₂) measurement and feature extraction of capnogram signals for extubation outcomes from mechanical ventilation. *Physiol Meas*. 2015;36(2):231–42.
7. de Souza LC, Lugon JR. Índice de respiração rápida e superficial como previsor de sucesso de desmame da ventilação mecânica: utilidade clínica quando mensurado a partir de dados do ventilador. *J Bras Pneumol*. 2015;41(6):530–5.

Ewerton Cousin^{a,1}, Elielton de Almeida Machado^{a,1}, Gustavo Dias Ferreira^{b,*2}, Marilene Rabuske^{a,3}, Isadora Pisani^{a,4}, Márcio Osório Guerreiro^{a,5}, Rafael Bueno Orcy^{b,2}

^a São Francisco de Paula University Hospital, Catholic University of Pelotas (UCPel), Rio Grande do Sul, Brazil
^b Department of Physiology, Federal University of Pelotas (UFPel), Rio Grande do Sul, Brazil

*Corresponding author. Department of Physiology and Pharmacology, Federal University of Pelotas, Campus Universitário Capão do Leão, Pelotas, RS 96010-900, Brazil. Tel.: +55 53 32757335.

E-mail address: gusdiasferreira@gmail.com (G.D. Ferreira).

¹ Physical Therapist.

² Department of Physiology.

³ Professor Course of Physiotherapy.

⁴ Medicine student of Catholic University of Pelotas.

⁵ Professor Course of Medicine.

<https://doi.org/10.1016/j.pulmoe.2018.08.002>
2531-0437/

© 2018 Sociedade Portuguesa de Pneumologia. Published by Elsevier España, S.L.U. This is an open access article under the CC BY-NC-ND license (<http://creativecommons.org/licenses/by-nc-nd/4.0/>).

Tuberculosis incidence rate among the homeless population: The impact of socio-demographic and health-related variables



Dear Editor,

Tuberculosis (TB) is an example of a long-standing epidemic: it has evolved over more than 2000 years and is the ninth leading cause of death worldwide and the leading cause of infectious disease.¹ Homelessness is widely acknowledged as a TB risk factor: in fact, the need to address the most vulnerable and hard-to-reach groups – among which the homeless are listed – has been recently highlighted in an action framework aiming at the elimination of TB in low-incidence countries.² In Portugal, data from 2011 shows that TB incidence among homeless was five times higher than within the general population.³ This study intended to identify socio-demographic and health-related variables in the general population and among TB patients that are associated with TB incidence in the homeless population.

This was a retrospective study focused on a seven-year period (2008–2014) and on the 18 districts of mainland Portugal. Information regarding TB incidence and patients' characteristics, such as homelessness status (defined as someone living in the streets with no shelter or lacking a fixed address), HIV co-infection, foreign-born, alcohol abuse (based on subjective information – CAGE questionnaire⁴) and illicit drug abuse (considered if there are withdrawal or tolerance symptoms, not including occasional consumption) was extracted from the Portuguese TB surveillance system (SVIG-TB). Socio-demographic and health-related data, such as total population, population density, working age population (aged 15–64 years), elderly population (aged ≥65 years), immigrant population, unemployed population, physicians (proportion in the population) and HIV

notification rate, were collected from Statistics Portugal, Employment and Vocational Training Institute and National Health Institute Doutor Ricardo Jorge.

The longitudinal effect of the studied variables on the incidence rate of TB among the homeless was estimated by a mixed-effects linear regression model with: (1) a random intercept taking the inter-district variability into account; (2) a residuals variance function depending exponentially on the fitted values.⁵ Comparison between models was based on the likelihood ratio test for nested models and on the Akaike Information Criteria (AIC) otherwise.⁶ Statistical analysis was performed with the R language and software environment for statistical computation, version 3.3.2.⁷

TB incidence rate in mainland Portugal has steadily decreased from 24 cases per 100 000 inhabitants in 2008 to 17 cases per 100 000 inhabitants in 2014. However, the incidence rate of TB among the homeless has not accompanied the same decreasing trend: it remained approximately stable from 1.2 cases per 100 000 inhabitants in 2008 to 0.97 cases per 100 000 inhabitants in 2014.

Our results indicate that TB incidence rate among homeless people is associated with HIV co-infection and alcohol abuse among TB patients and the proportion of elderly people in the overall population. [Fig. 1](#) describes the longitudinal evolution of homeless TB patients per 100 000 inhabitants per district and the predictors found to be associated. [Table 1](#) describes the results obtained from the fitted regression model: briefly, an increase of 100 HIV co-infected cases or alcohol abusers among TB patients is associated with an increase on the incidence of TB among the homeless by an average of 14 or 11 cases per 100 000 population, respectively. The proportion of elderly people has a smaller impact: an increase of 1000 elderly persons in the general population is associated with an increase on the incidence of TB among the homeless by an average of 3 cases per 100 000 population.

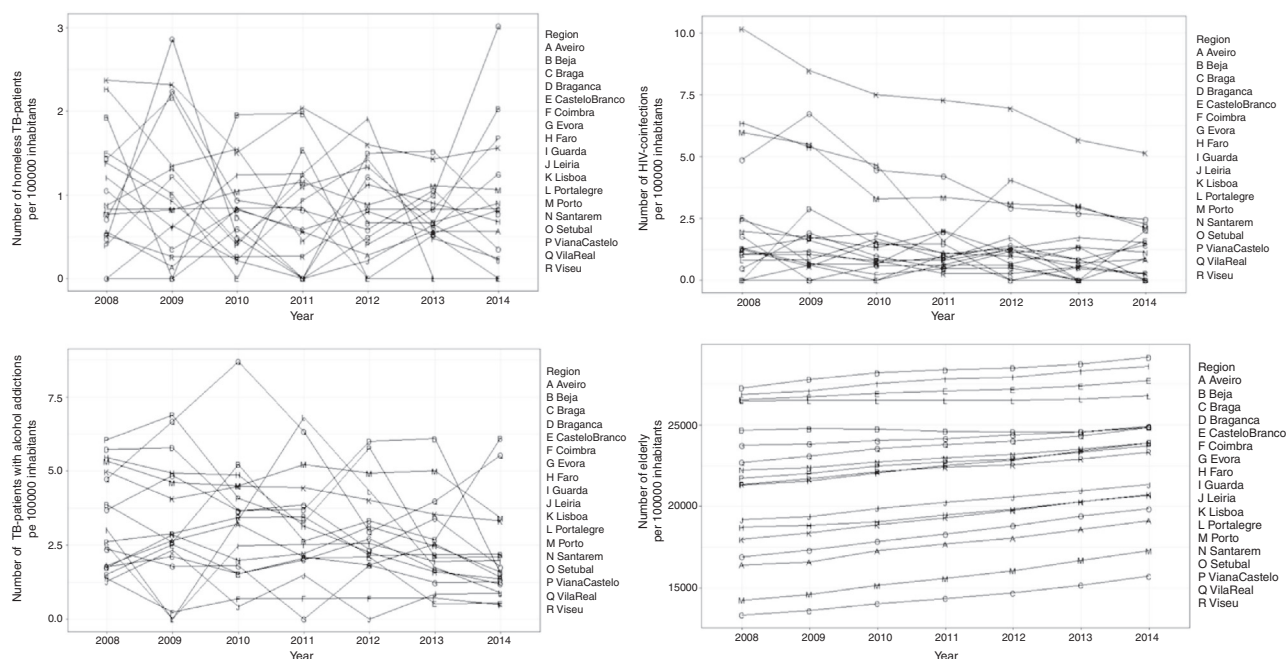


Figure 1 Time evolution of homeless TB patients, HIV/TB co-infection, alcohol abuse among TB patients and elderly population (per 100 000 inhabitants) by district.

Table 1 Estimates obtained from the fitted regression model evaluating the effects of HIV co-infection and alcohol abuse among TB patients, and the proportion of elderly population, in the longitudinal evolution of the TB incidence rate among homeless people. The standard deviation of the random effect was estimated at 0.138 (0.057–0.339) while the power of the variance exponential function was of 0.595 (0.232–0.959).

	Coefficient	Standard Error	<i>t</i> -Statistic	<i>p</i> -value
Intercept	−0.285	0.365	−0.782	0.436
TB patients with HIV co-infection ^a	0.136	0.040	3.398	0.001
TB patients with alcohol abuse ^a	0.109	0.032	3.357	0.001
Elderly population ^b	0.003	0.002	1.773	0.079

^a Described by number per 100 000 population

^b Described by number per 1000 population.

The relationship between alcohol abuse and TB, as well as between TB and the elderly, has been previously acknowledged.^{8,9} Moreover, HIV co-infection is universally recognized as the single most important risk factor for TB in regions with a high TB burden.¹⁰ Importantly, both alcohol abuse and HIV infection have been previously associated to homeless TB patients.³

Our study has a number of strengths that ought to be highlighted: we collected data from the whole of mainland Portugal for a period of seven years, obtained from several national institutions. On the other hand, a few limitations should also be acknowledged: although TB notification is mandatory, reporting coverage may be particularly low among the homeless, given that this high-risk group may tend to avoid primary care facilities, delaying or preventing a timely TB diagnosis; and finally, as all data was extracted from national databases, we were limited by the degree of completeness and accuracy, as well as by the variables considered, which may have left out important indicators.

Overall, this study allowed us to conclude that preventive interventions targeting HIV co-infected and alcohol abusers among TB patients, as well as the elderly in the general population, may decrease TB incidence rate among homeless people. In fact, although an early diagnosis and effective treatment remains the cornerstone strategy, complementing this approach with preventive measures targeting social determinants and biological risk factors, such as the ones highlighted, may be useful to achieve the target of TB elimination in Portugal and other low-burden countries.

Funding

This work was supported by the contribution of Iceland, Liechtenstein and Norway, through the EEA Grants, under the Public Health Initiatives Programme (PT 06), grant number 138DT1. Olena Oliveira was supported by the project NORTE-08-5369-FSE-000041, financed by

the Operational Program Norte 2020 and co-financed by the European Social Fund through a doctoral grant (UMINHO/BD/47/2016). Rita Gaio was partially supported by CMUP (UID/MAT/00144/2013), which is funded by FCT (Portugal) with national (MEC) and European structural funds (FEDER), under the partnership agreement PT2020.

Specific author contributions

Ana Luísa Vieira drafted the manuscript, Olena Oliveira and Marta Gomes supported data collection, Rita Gaio provided the statistical analysis, Raquel Duarte conceived and designed the study and all authors revised the manuscript and approved its final version.

Conflicts of interest

The authors have no conflicts of interest to declare.

Acknowledgments

Ana Luísa Vieira would like to thank Catarina L Santos for medical writing advice.

References

1. WHO. Global tuberculosis report 2017; 2017, doi:WHO/HTM/TB/2017.23.
2. Lönnroth K, Migliori GB, Abubakar I, D'Ambrosio L, de Vries G, Diel R, et al. Towards tuberculosis elimination: an action framework for low-incidence countries. *Eur Respir J*. 2015;45:928–52, <http://dx.doi.org/10.1183/09031936.00214014>.
3. Dias M, Gaio R, Sousa P, Abranches M, Gomes M, Oliveira O, et al. Tuberculosis among the homeless: should we change the strategy? *Int J Tuberc Lung Dis*. 2017;21:327–32, <http://dx.doi.org/10.5588/ijtld.16.0597>.
4. Da Paz Filho GJ, Sato LJ, Tuleski MJ, Takata SY, Ranzi CCC, Saruhashi SY, et al. Emprego do questionário CAGE para detecção de transtornos de uso de álcool em pronto-socorro. *Rev Assoc Med Bras*. 2001;47:65–9, <http://dx.doi.org/10.1590/S0104-42302001000100032>.
5. Pinheiro JC, Bates DM. *Mixed-effects models in S and S-PLUS*. New York: Springer; 2000.
6. Anderson DR. *Model based inference in the life sciences: a primer on evidence*. New York, NY, USA: Springer; 2008.
7. R Development Core Team. *R: a language and environment for statistical computing*. Vienna, Austria: The R Foundation for Statistical Computing; 2011. ISBN: 3-900051-07-0. <http://www.R-project.org/>
8. Santos-Silva AF, Migliori GB, Duarte R. Tuberculosis, alcohol and tobacco: dangerous liaisons. *Rev Port Pneumol (English Ed)*. 2017;23:177–8, <http://dx.doi.org/10.1016/j.rppnen.2017.05.001>.
9. Li J, Chung P-H, Leung CLK, Nishikiori N, Chan EYY, Yeoh E-K. The strategic framework of tuberculosis control and prevention in the elderly: a scoping review towards End TB targets. *Infect Dis Poverty*. 2017;6:70, <http://dx.doi.org/10.1186/s40249-017-0284-4>.
10. Bruchfeld J, Correia-Neves M, Kallenius G. Tuberculosis and HIV coinfection. *Cold Spring Harb Perspect Med*. 2015;5:a017871.

A.L. Vieira^{a,*}, O. Oliveira^{b,c,d}, M. Gomes^{d,e}, R. Gaio^{f,g}, R. Duarte^{d,h,i}

^a *Pulmonology Department, Hospital de Braga, Braga, Portugal*

^b *Life and Health Sciences Research Institute (ICVS), School of Medicine, University of Minho, Braga, Portugal*

^c *ICVS/3B's, PT Government Associate Laboratory, Braga/Guimarães, Portugal*

^d *EPIUnit, Public Health Institute, University of Porto, Porto, Portugal*

^e *Occupational Health Department, Centro Hospitalar de Vila Nova de Gaia/Espinho, Vila Nova de Gaia, Portugal*

^f *Department of Mathematics, Faculty of Sciences, University of Porto, Porto, Portugal*

^g *Centre of Mathematics, University of Porto, Porto, Portugal*

^h *Pulmonology Department, Centro Hospitalar de Vila Nova de Gaia/Espinho, Vila Nova de Gaia, Portugal*

ⁱ *Department of Clinical Epidemiology, Predictive Medicine and Public Health, Faculty of Medicine, University of Porto, Porto, Portugal*

*Corresponding author.

E-mail address: analuisapvieira@gmail.com (A.L. Vieira).

<https://doi.org/10.1016/j.pulmoe.2018.05.001>
2531-0437/

© 2018 Sociedade Portuguesa de Pneumologia. Published by Elsevier España, S.L.U. This is an open access article under the CC BY-NC-ND license (<http://creativecommons.org/licenses/by-nc-nd/4.0/>).